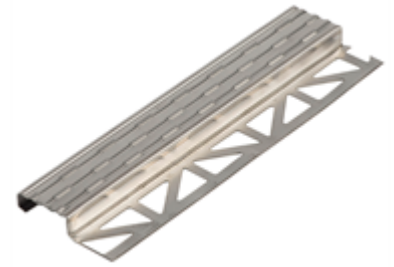


STAINLESS STEEL STAIRCASE PROFILE



- > high-quality
- > modern
- > non-slip

Product description

Stair profile made from stainless steel non-slip, creative surface. The non-slip quality must be assessed with R10 and the displacement space with V4. Material: cold-rolled Cr-Ni stainless steel: V2A; WN 1.4301 Surface: 2R (III D)

For forming optically elegant step edges, non-slip or for creative design in end area. e.g.: as ledge. It is suitable for laying with tiles or natural stone slabs. Especially recommended for public buildings, as the profile is extremely load-bearing and stable. Thanks to its trendy design the profile is also well suited for private use.

Delivery format:

| Container | Outer packaging | Pallet |
|--------------|-----------------|--------|
| 2,5 M / Pcs. | | 100 |

Storage:

Can be stored frost-free, cool, and dry on wooden shelves in unopened original container: unlimited shelf live

Processing

Processing:

The stepped profile must be selected according to the height of the tile edge. It is laid under the laying material with the moulded part.

Technical data

| | |
|--------------|-------|
| Length | 2.5 m |
| Height MS 9 | 9 mm |
| Height MS 11 | 11 mm |

Substrate

Suitable substrates:

Concrete
Cement screed
Anhydrite screed

44046, STAINLESS STEEL STAIRCASE PROFILE, valid from: 14.11.2018, Magdalena Riegler, Page 1

Tile laying technology

Mastic asphalt
Plaster
Lime-cement plaster
Masonry
Gypsum plasterboards
smooth concrete
aerated concrete
Wooden substrates

The substrate must be dry, frost-free, solid, weight-bearing, dimensionally stable, free of dust, dirt, oil, grease, release agents, and loose parts, and it must comply with the applicable technical national and European directives, standards, and "generally accepted rules of the trade".

Product and processing instructions

Material information:

- When working outside the ideal temperature and/or humidity range, the material properties may change significantly.
- Bring materials up to temperature accordingly before processing!
- To retain the product properties, no foreign materials may be mixed in!
- Water dosing amounts or dilution specifications must be precisely kept!
- Check coloured products before use for colour accuracy!
- Colour consistency can only be guaranteed within a batch.
- Environmental conditions significantly influence colouring.

Environmental information:

- Do not process at temperatures below +5°C!
- The ideal temperature range for material, substrate, and air is +15°C to +25°C.
- The ideal relative air humidity range is between 40% to 60%.
- Increased humidity and/or lower temperatures delay and lower air humidity and/or higher temperatures accelerate drying, setting, and hardening.
- Ensure sufficient ventilation during the drying, reaction, and hardening phase; avoid draughts!
- Protect from direct sunlight, wind, and weather!
- Protect adjacent components!

Tips:

- We recommend using a test surface first or a small area for initial, small-scale testing.
- Observe the product data sheets of all MUREXIN products used in the system.
- Keep a genuine original container of the respective batch for later repair work.

The information provided reflects average values obtained under laboratory conditions. Due to the use of natural raw materials, the indicated values of individual deliveries may vary slightly without impacting the product suitability.

Safety instructions

This leaflet is based on extensive experience, is intended to convey the best of our knowledge, is not legally binding and does neither constitute a contractual legal relationship nor a subsidiary obligation resulting from the bill of sale. The quality of our materials is guaranteed within the framework of our general terms and conditions. Our products may be used by professionals and/or experienced and accordingly technically skilled persons only. Users are not released from inquiring in case of uncertainties or from rendering professional workmanship. We recommend using a test surface first or a small area for initial, small-scale testing. Naturally, it is not possible to describe or foresee all possible current and future uses and peculiarities. Information that is assumed to be familiar to experts has been omitted.

Please observe the current, technical, national and European standards, guidelines and data sheets regarding materials, substrates and the subsequent construction. Please contact us if you have any reservations or doubt. This version is rendered invalid if a new version is released. The most recent data sheets, safety data sheets and the terms and conditions are available online at www.murexin.com.